



## Grinding Wheels

# GF01 SERIES BR385

## Grinding wheels that realize high quality glass grinding

The BR385 bond realizes quality glass grinding by employing a bond that has ideal wear properties.

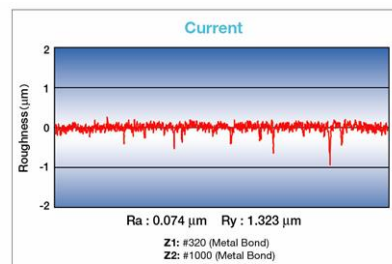
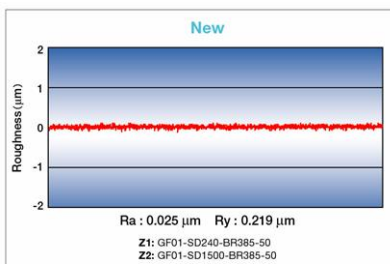
A bond specifically designed to grind glass has been added to DISCO's grinding wheel line-up. By employing the BR385 bond for rough and finish grinding, it is possible to carry out high quality grinding of fine surfaces. It also realizes continuous stable grinding, as intermediate dressing is not necessary.

- Enables high quality glass grinding
- Enables stable grinding without intermediate dressing
- Employing a new wheel base (GF01) enables efficient supply of grinding water.



### ■ Roughness

A higher quality surface finish can be obtained compared to existing wheels.

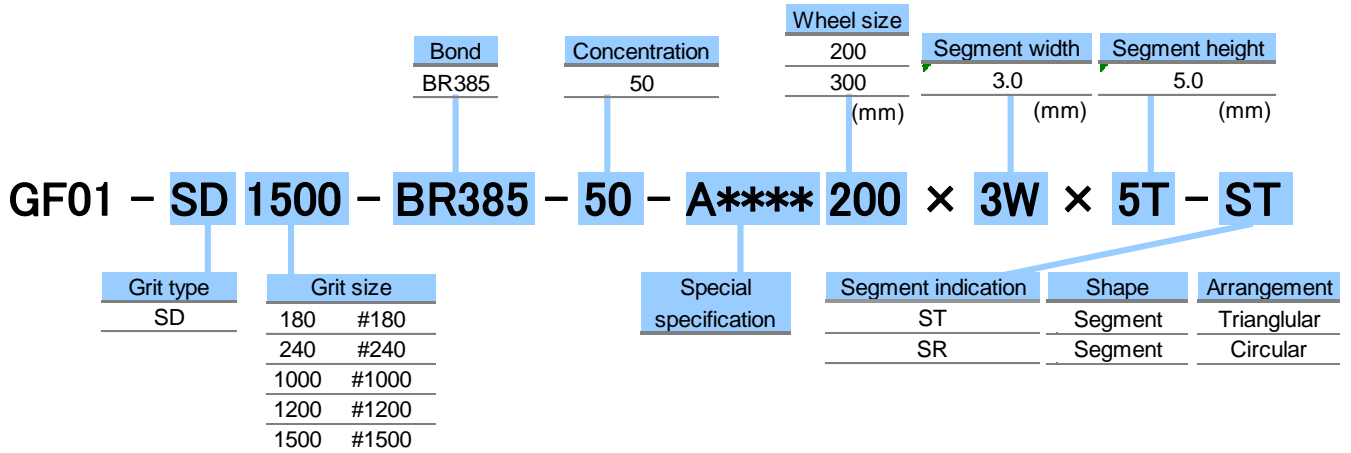


Workpiece : 6-inch diameter borosilicate glass

### Applications

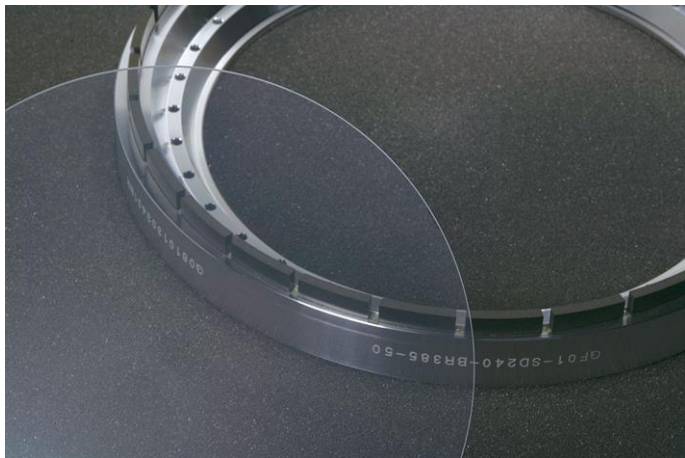
Borosilicate glass, Non-alkali glass, Crystal, Various glass types, etc.

**Specifications**

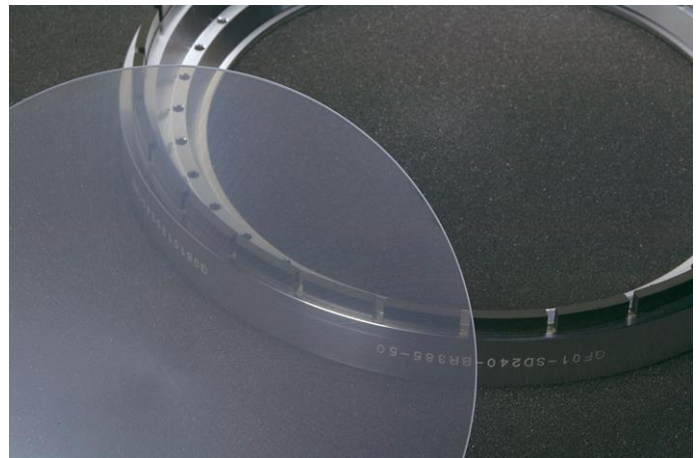


**Experimental Data**

A higher quality surface finish can be obtained compared to existing wheels.  
The difference between the grinding wheels can be clearly seen in the two photographs below.



**New**



**Current**

Workpiece: ø6-inch borosilicate glass

**When ordering**

Please contact a DISCO representative with any product needs such as type, wheel size, and quantity.

When you place the first order with us, please provide application information such as materials to grind, sizes, machine, type, and other specifications.

We are ready to help you to determine which of our products is most appropriate for your application.

Due to improvements in our products, it is possible that product specifications may be changed without advanced notice.

Please confirm the product specifications with a DISCO representative.



**To use these DISCO blades and wheels (hereafter precision tools) safely... Please read carefully and follow the instructions below to prevent any accidents or injuries.**

- USE a safety cover (nozzle case, cover), equipped as a standard accessory, to avoid injury.
- DO NOT EXCEED the specified rpm limit indicated on the precision tools.
- FOLLOW the equipment's instruction manual to mount the precision tools properly.
- DO NOT DROP OR HIT the precision tools. This may cause breakage or injury.
- Always CHECK the precision tools for chipping or any other damage before starting to use it. DO NOT USE the tools if there is any damage.
- READ the operation manual for the cutting/grinding equipment before use.
- DO NOT USE the precision tools with modified or customized equipment.
- DO NOT USE precision tools that are a different size from the one recommended for your equipment.
- DO NOT USE the precision tools for any other purpose than grinding, cutting, or polishing.
- Always USE water or coolant to prevent damage to the precision tools.