



Automatic Dicing Saw

DAD323

Automatic dicing saw with the world's smallest footprint for high space efficiency

Support for a variety of applications from semiconductor wafers to electronic parts

- Support for workpieces as large as 6-inch square wafers
- Incorporation of the Y-axis scale specification (option) enables high accuracy index control
- Equipped with a high torque 2.0 kW spindle
- The DAD323 is highly versatile with support for glass, ceramics and other difficult-to-cut materials. In addition, a high revolution speed 1.8 kW spindle (max revolutions: 60000 min⁻¹) is also selectable as an option.

High productivity

- With the implementation of a high performance MCU, the speed of software operation and operation response times have been improved.
- The speed of the X, Y, and Z-axes have been improved for increased throughput.
- X-axis return speed is now 800 m/s (increased by 1.6x compared to the current model)

	Current (DAD322)	DAD323
X-axis	500	800
Y-axis	150	200
Z-axis	30	80

(mm/s)

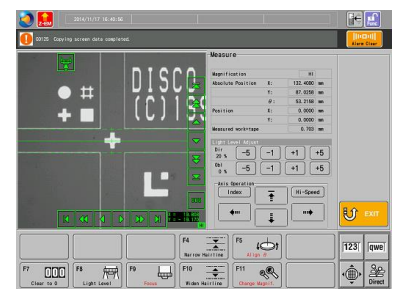
World's smallest footprint*

- The DAD323 features an even more compact design featuring a width of only 490 mm.
- The reduced profile contributes towards a large increase in terms of productivity per unit area, especially when multiple units are used together.
- * Investigated internally



Ease of operation

- The auto alignment function is included as a standard feature.
- Operation via a 15-inch monitor and a GUI (Graphical User Interface)
- Large monitor for improved legibility and an increase in the amount of displayable information.
- Installed with the same user-friendly operating system as the 3000 series (DAD322 compatibility mode is also supported)



Auto alignment

Comparison of operating panel

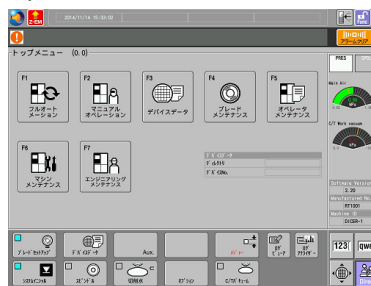


DAD322



DAD323

Operation interface



3000 series



322 compatibility mode

Specification

Workpiece size		-	φ6" / □6" (DPR)
X-axis	Cutting range	mm	160
	Cutting speed	mm/sec	0.1 - 800
Y-axis	Cutting range	mm	162
	Index step	mm	0.0001
	Index positioning accuracy	mm	0.005/160 (Single error)0.003/5
Z-axis	Max. stroke	mm	32.2 (φ2" blades)
	Moving resolution	mm	0.00005
	Repeatability accuracy	mm	0.001
θ-axis	Max. rotating angle	deg	320
Spindle	Output	kW	2.0at40,000min ⁻¹
	Rated torque	N·m	0.48
	Revolution speed	min ⁻¹	3,000 - 40,000
Machine		mm	490 × 870 × 1,600
Machine weight		kg	Approx.400

Environmental Conditions

- Use clean, oil-free air (dew point between -10 - -20 , residual oil: 0.1 ppm, and filtration rating: 0.01μm/99.5 % or more).
- Keep room temperature fluctuations within ±1°C of the set value. (Set value should be between 20 - 25 °C).
- Keep cutting water and cleaning water 2 °C above room temperature (fluctuations within ±1 °C).
- The machines should be used in an environment, free from external vibration. Do not install machine near a ventilation opening, heat generation equipment or oil mist generating parts.
- This machine uses water. In case of water leakage, please install the machine on the floor with sufficient waterproofing and drainage treatments.
- * All pressures specified above are gauge pressures.
- * As the above specification may change due to technical modifications.
Please confirm when placing your order.
- * For further information, please contact your local sales representative.