



Automatic Dicing Saw DAD3360

Ø300 mm manual dicer to meet a variety of needs

Exceptional processing flexibility

While offering an even more compact footprint than the existing DAD3350, workpieces of sizes up to 300 mm are now supported. Furthermore, a high output 1.8 kW spindle is now available as a standard option. The DAD3360 can cut not only silicon wafers, but also products of a variety of sizes and materials, such as large package substrates, electronic parts including SAW filters, and more.

A wide selection of options

Like its predecessors, the DAD3360 has a wide selection of options available to improve processing quality, to reduce running cost, and to improve its ability to process hard-to-cut materials.



Principal options

2.2 kW spindle

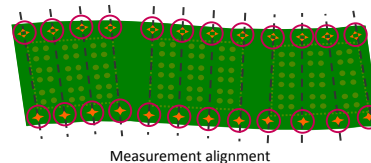
A high torque and high rigidity 2.2 kW spindle can be selected as an option which offers a maximum ø5-inch blade size and makes processing applications which require a heavy load on the blade possible. This includes processing of fused quartz, ceramics and other hard to cut materials, processing workpieces with a thickness of more than 3 mm, and grooving with a thick blade.

Measurement alignment

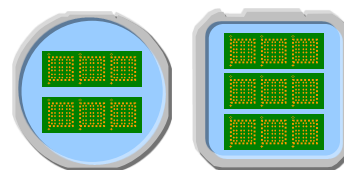
Aligns the substrate using multiple alignment points to allow for high precision even when processing substrates made of materials such as resin which have irregular expansion and contraction

Multiple workpiece mounting

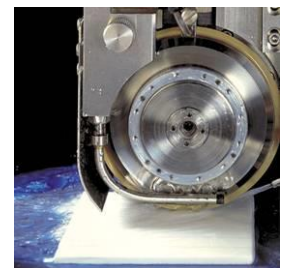
Multi-wafer support gives the DAD3360 the ability to process multiple package substrates on one tape frame (supports a maximum of 16 wafers)



Measurement alignment

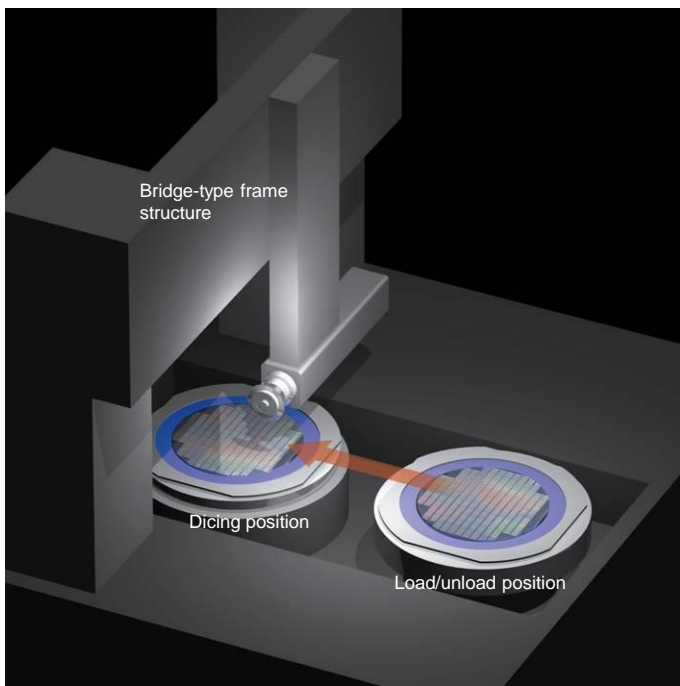


Multiple workpiece mounting



Ø5-inch blade

Automatic Dicing Saw DAD3360



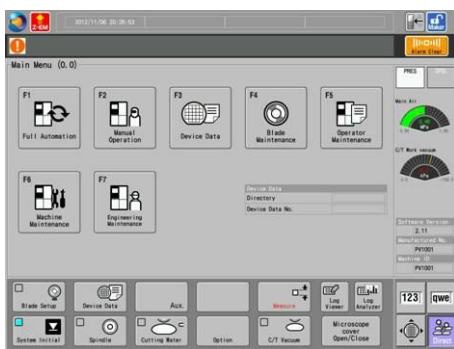
High throughput and high stability processing

Stable processing is maintained due to the use of a bridge-type frame structure, which is highly effective at suppressing thermal expansion and vibrations, to provide the forward support for the spindle. Additionally, this allows the movement speed of each axis to be increased to provide high processing throughput.

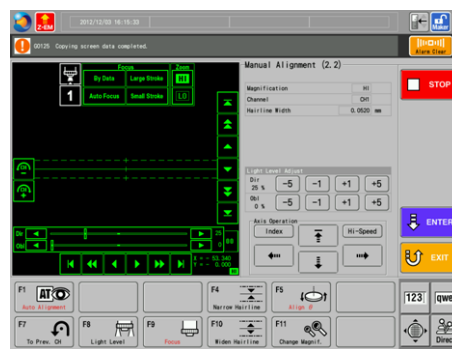
User friendliness

An LCD touch panel with a GUI (graphical user interface) is included. Processing conditions, equipment status, and more is all presented visually. Operating the equipment is simple and needs nothing more than a simple touch of the icons on the interface.

In addition, XIS mode (Extended Interface System mode) which is a feature of the DFD6000 series is included as a standard option. Commonly used features such as light level adjustment, focus adjustment, and screen movement are all gathered on one screen providing a boost to efficiency.



Top menu



Manual alignment screen

Specifications		1.8kW	2.2kW
Specification		Unit	
Workpiece size		-	φ 300 (□250/DPR)
X-axis	Cutting range	mm	310
	Cutting speed	mm/sec	0.1 – 1,000
Y-axis	Cutting range	mm	310
	Index step	mm	0.0001
	Index positioning accuracy	mm	0.002/310 (Single error)0.002/5
Z-axis	Max. stroke	mm	32.2 31.4
	Moving resolution	mm	0.00005
	Repeatability accuracy	mm	0.001
θ-axis	Max. rotating angle	deg	320
	Rated torque	N·m	0.29 0.7
Spindle	Revolution speed range	min ⁻¹	6,000-60,000 3,000-30,000
	Machine dimensions(WxDxH)	mm	880 × 1,000 × 1,800
Machine weight		kg	Approx.1,100

Environmental Conditions

- Use clean, oil-free air (dew point between -10 - -20 , residual oil: 0.1 ppm, and filtration rating: 0.01µm/99.5 % or more).
- Keep room temperature fluctuations within ±1°C of the set value. (Set value should be between 20 - 25 °C).
- Keep cutting water and cleaning water 2 °C above room temperature (fluctuations within ±1 °C).
- The machines should be used in an environment, free from external vibration. Do not install machine near a ventilation opening, heat generation equipment or oil mist generating parts.
- This machine uses water. In case of water leakage, please install the machine on the floor with sufficient waterproofing and drainage treatments.
- * All pressures specified above are gauge pressures.
- * As the above specification may change due to technical modifications. Please confirm when placing your order.
- * For further information, please contact your local sales representative.