



# Automatic Dicing Saw DAD3651

## Ultra compact dual-spindle dicing saw

### Small footprint

The optimal design of the DAD3651 combines high functionality and ultra compactness for a dual-spindle automatic dicing saw giving it a footprint 2/3 the size of the widely used single-spindle DAD3350 dicer for ø8-inch wafers.

### High throughput

By dicing with 2 spindles simultaneously in dual cut mode, high throughput of as much as twice\* that of a single-spindle dicer can be achieved.

\*Actual throughput varies depending on the workpiece size and processing parameters.

### High processability

DAD3651 achieves a small footprint while continuing to support the processing of workpieces up to ø8 inches. This equipment also supports large square workpieces up to 250 mm with the addition of a user-specified specification. Also, by mounting a different blade on each spindle and using step cut to dice in 2 stages, it is possible to process workpieces requiring very high quality.



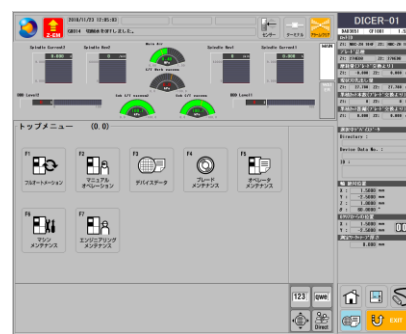
### High-rigidity spindle

- Includes a 1.8 kW spindle with high rigidity, which further improves the processing stability.

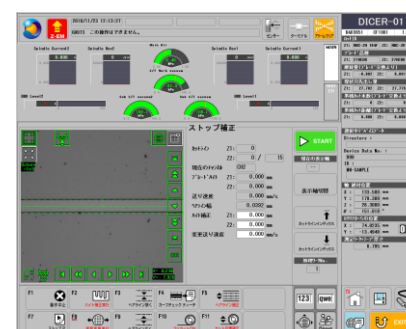
### Enhanced ease of use

- Using a 19-inch LCD touch panel, equipment operation can be performed while constantly checking for equipment machine and blade conditions.
- Consolidates basic equipment access at the front for operation and workpiece or blade replacement.
- Reduces operator stress by the inclusion of the automatic alignment function as standard.

\* GUI: Graphical User Interface



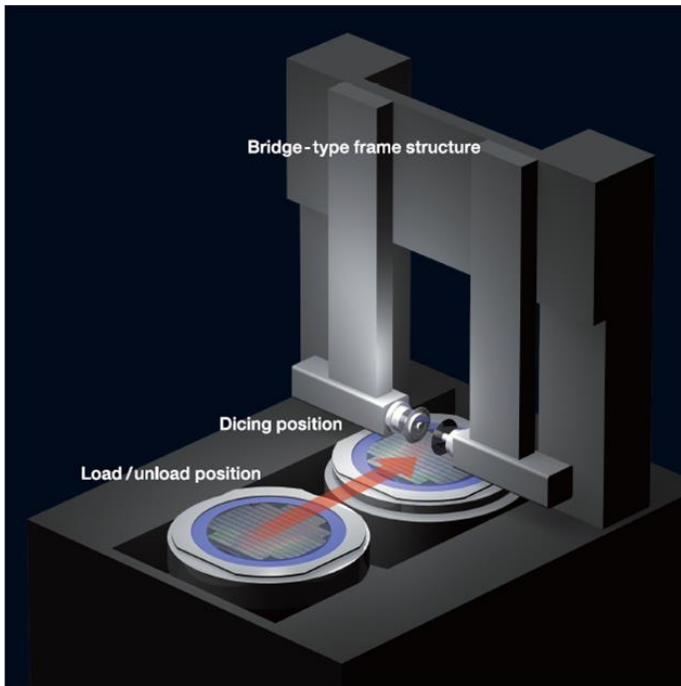
Top menu



Stop Correction Screen

**35% smaller footprint**  
(Compared to DAD3350)

DAD3350 (0.95m <sup>2</sup> )
DAD3651 (0.62m <sup>2</sup> )



**Specifications**

Specification		Unit	
Workpiece size		-	$\phi 8''$ ( $\square 250, \phi 300$ mm/DPR)
X-axis	Cutting range	mm	260
	Cutting speed	mm/sec	0.1 - 1,000
Y-axis	Cutting range	mm	260
	Index step	mm	0.0001
	Index positioning accuracy	mm	0.002/260 (Single error)0.002/5
Z-axis	Max. stroke	mm	32.2
	Moving resolution	mm	0.00002
	Repeatability accuracy	mm	0.001
$\theta$ -axis	Max. rotating angle	deg	320
Spindle	Output	kW	1.8
	Rated torque	N·m	0.29
	Revolution speed range	min <sup>-1</sup>	6,000 - 60,000
Machine dimensions(W × D × H)		mm	790 × 790 × 1,890
Machine weight		kg	Approx.1,100

**Environmental Conditions**

- Use clean, oil-free air (dew point between -10 - -20 , residual oil: 0.1 ppm, and filtration rating: 0.01 $\mu$ m/99.5 % or more).
  - Keep room temperature fluctuations within  $\pm 1^{\circ}\text{C}$  of the set value. (Set value should be between 20 - 25  $^{\circ}\text{C}$ ).
  - Keep cutting water and cleaning water 2  $^{\circ}\text{C}$  above room temperature (fluctuations within  $\pm 1^{\circ}\text{C}$ ).
  - The machines should be used in an environment, free from external vibration. Do not install machine near a ventilation opening, heat generation equipment or oil mist generating parts.
  - This machine uses water. In case of water leakage, please install the machine on the floor with sufficient waterproofing and drainage treatments.
- \* All pressures specified above are gauge pressures.  
 \* As the above specification may change due to technical modifications.  
 Please confirm when placing your order.  
 \* For further information, please contact your local sales representative.